

YEAR 2005

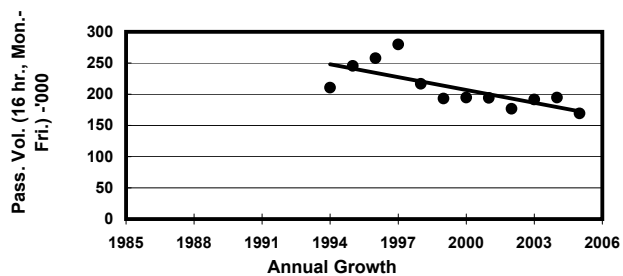
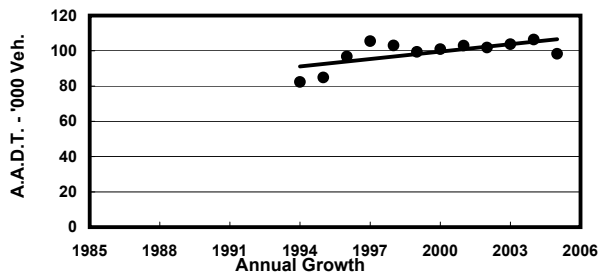
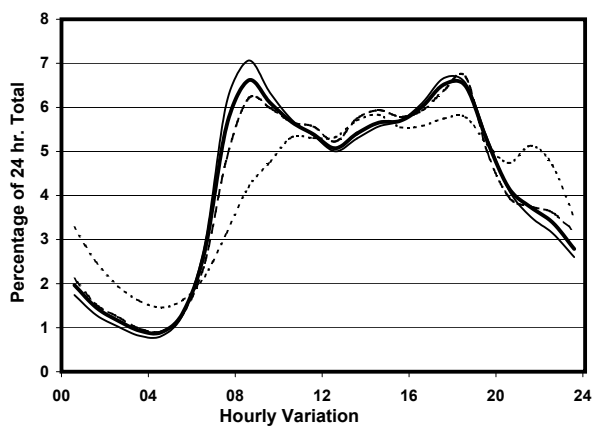
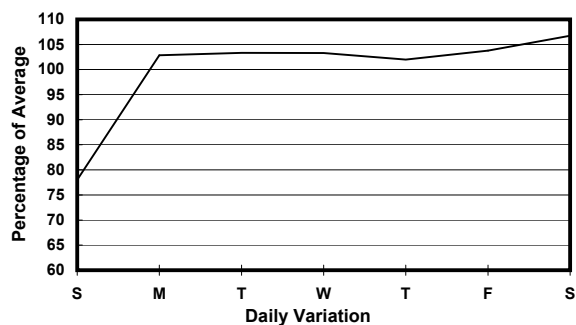
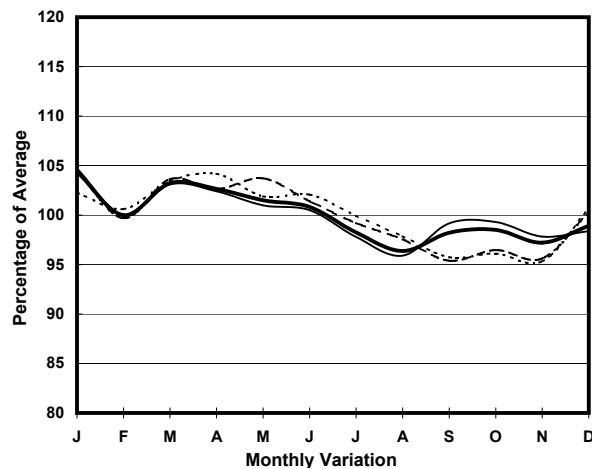
Location

Screenline Y-Y(Boundary between Tuen Mun & Yuen Long)

Stations on Cordon/Screenline

5025 and 6213

1. TRAFFIC FLOW VARIATION AND GROWTH



— All day — Mon.- Fri. - - - Sat. - - - - Sun.

2. TRAFFIC CHARACTERISTICS (BY DIRECTION)

Parameter

EAST BOUND

Parameter	All - Day	Mon. - Fri.	Sat.	Sun.
A.A.D.T.	49150	51220	53370	38260
R 12 / 24 - %	71.5	72.7	71.5	63
R 16 / 24 - %	87.8	88.7	87.4	82.6
AM Peak Hour	0800-0900	0800-0900	0800-0900	0900-1000
One-way flow at AM peak hour	3210	3560	3320	1890
T - % (AM)	-	30.4	-	-
PM Peak Hour	1700-1800	1700-1800	1700-1800	1800-1900
One-way flow at PM peak hour	3280	3500	3510	2220
T - % (PM)	-	35.2	-	-
Prop.of commercial vehicles - 16 hr.	-	34.4	-	-

WEST BOUND

Parameter	All - Day	Mon. - Fri.	Sat.	Sun.
A.A.D.T.	49170	51160	52670	39400
R 12 / 24 - %	68.9	70.2	68.4	61.5
R 16 / 24 - %	85.6	86.3	85.1	81.3
AM Peak Hour	0800-0900	0800-0900	0800-0900	0900-1000
One-way flow at AM peak hour	3290	3670	3260	1820
T - % (AM)	-	27.9	-	-
PM Peak Hour	1800-1900	1700-1800	1800-1900	1700-1800
One-way flow at PM peak hour	3170	3320	3670	2270
T - % (PM)	-	36.5	-	-
Prop.of commercial vehicles - 16 hr.	-	31.8	-	-

3. OTHER INFORMATION AND COMMENT

4. Vehicle classification and occupancy - Monday to Friday

Time		Class of vehicle									
		Motor	Private	Taxi	Private	PLB	Goods veh.		Non	Fr. Bus	
		Cycle	Car		LB		Light	M & H	Fr. Bus	SD	DD
0700-0800	Pro	2.5	25.1	9.4	1.1	4.2	23.4	27.1	6.0	0.1	1.1
	Ocp	1.1	1.4	1.8	2.9	11.2	1.4	1.1	8.1	12.2	21.6
0800-0900 Peak Hour	Pro	2.1	38.8	6.0	1.8	3.5	18.7	25.9	2.5	0.1	0.6
	Ocp	1.0	1.3	1.8	4.2	12.5	1.4	1.1	7.3	11.5	25.7
0900-1000	Pro	1.0	26.9	6.1	1.3	2.8	28.7	29.5	2.8	0.1	0.8
	Ocp	1.1	1.3	1.7	2.5	12.2	1.4	1.1	6.3	7.1	14.6
1000-1100	Pro	0.9	22.9	6.3	1.1	2.4	26.9	37.2	1.6	0.1	0.7
	Ocp	1.0	1.3	1.5	2.7	10.7	1.5	1.1	7.8	5.2	10.7
1100-1200	Pro	0.6	22.8	5.3	1.7	3.1	26.1	38.5	1.3	0.1	0.6
	Ocp	1.0	1.3	1.5	2.1	8.6	1.6	1.1	2.6	3.8	12.1
1200-1300	Pro	1.4	26.7	4.2	1.1	2.0	26.5	35.8	1.6	0.1	0.7
	Ocp	1.0	1.4	1.6	3.0	8.4	1.6	1.1	5.3	3.5	9.0
1300-1400	Pro	1.3	22.7	4.3	1.3	2.8	28.4	36.6	2.0	0.1	0.6
	Ocp	1.0	1.6	1.7	3.2	9.6	1.5	1.1	7.9	3.3	10.6
1400-1500	Pro	1.4	23.7	3.8	2.5	2.1	26.3	38.0	1.6	0.1	0.5
	Ocp	1.1	1.4	1.3	2.2	10.1	1.4	1.1	5.6	6.7	11.1
1500-1600	Pro	1.2	24.0	3.7	1.5	2.2	27.2	37.8	1.5	0.1	0.7
	Ocp	1.1	1.4	1.5	3.7	12.2	1.6	1.1	7.0	9.0	9.4
1600-1700	Pro	1.6	22.4	5.8	2.0	2.0	26.9	35.2	3.5	0.1	0.6
	Ocp	1.1	1.3	1.5	3.1	12.5	1.4	1.1	5.4	6.2	11.9
1700-1800	Pro	2.2	28.7	5.1	1.3	2.6	24.2	31.3	3.9	0.1	0.6
	Ocp	1.1	1.4	1.7	2.5	13.2	1.6	1.1	5.0	6.2	17.0
1800-1900	Pro	1.9	42.7	5.3	1.2	2.9	20.0	22.8	2.6	0.1	0.5
	Ocp	1.0	1.4	1.8	2.6	13.8	1.5	1.1	10.4	14.5	27.9
1900-2000	Pro	2.7	44.8	7.0	1.1	4.4	19.0	16.1	3.9	0.1	0.9
	Ocp	1.1	1.5	1.9	1.8	12.1	1.4	1.1	3.2	7.0	12.6
2000-2100	Pro	2.1	41.9	9.8	0.4	4.1	20.0	17.0	3.6	0.1	0.9
	Ocp	1.2	1.4	1.5	1.5	11.6	1.4	1.1	2.7	3.7	12.3
2100-2200	Pro	2.3	48.9	10.0	0.7	3.8	13.1	17.9	2.0	0.1	1.1
	Ocp	1.1	1.4	1.7	1.8	11.1	1.4	1.0	3.6	4.5	8.3
2200-2300	Pro	1.9	52.0	11.8	0.8	4.5	10.9	14.3	2.3	0.1	1.2
	Ocp	1.1	1.4	1.6	2.4	10.3	1.6	1.1	10.1	5.2	8.3
16 hours	Pro	1.7	31.1	6.2	1.4	3.0	23.5	29.6	2.7	0.1	0.7
	Ocp	1.1	1.4	1.7	2.8	11.4	1.5	1.1	6.2	6.9	14.2

Legend

- Pro.** Proportion of vehicles in % (Sum may not add up to 100% due to figure rounding)
- Ocp.** Average occupancy of vehicles
- M & H** Medium and Heavy